



PV INVERTER

Commercial Series / M50A_260

Features

- Toggle latch and fast installation design reduce installation efforts
- SUB_1G and Wi-Fi for quick commission via APP
- Fuseless design
- 6 MPP Trackers
- IV curve scanning, night time reactive power and anti-PID function
- IP66 and lightweight design
- Built-in DC switches, SPD and string monitoring
- Smart cooling system

www.deltaww.com



Product Overview

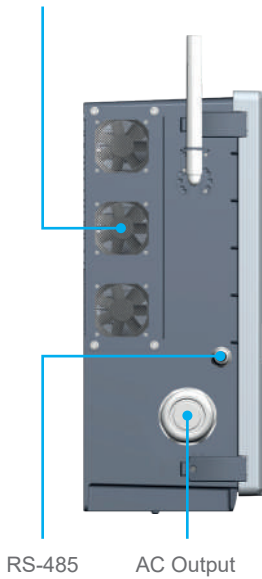
Delta M50A_260 is able to reach 98.7% peak efficiency, 98.3% Euro-efficiency over converting PV energy. 6 sets of MPPT allows more flexibility when PV arrays are facing different directions while minimizing energy losses and maximizing higher yields.



Feature Highlights

Swappable Fan Kit

Smart cooling system enhance the total plant performance and minimizing the noise.



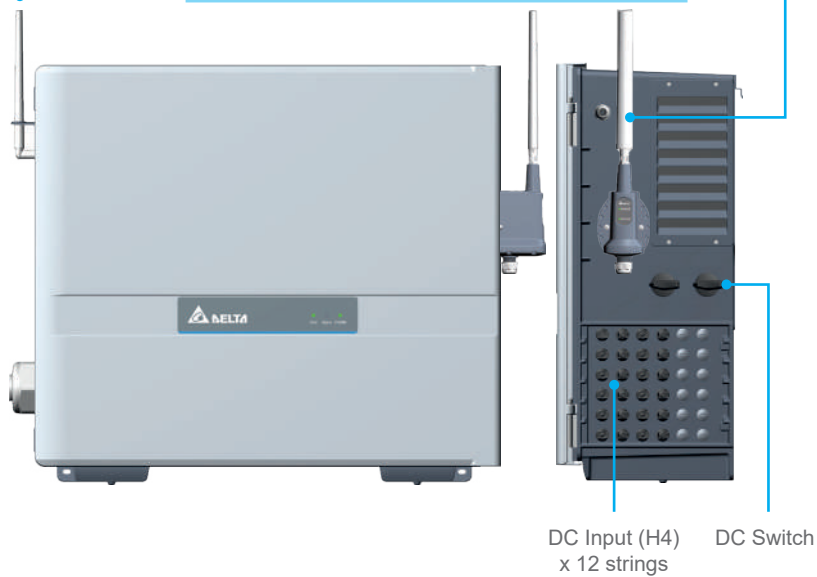
SUB_1G (optional)

Wireless Communication (SUB_1G/Wi-Fi) APP

MyDeltaSolar APP provides quick on-site commission and total plant monitoring solution.



Wi-Fi (optional)



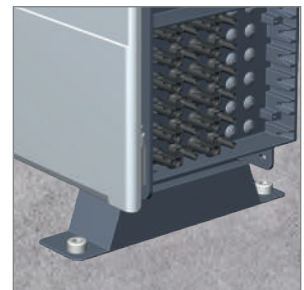
Fast Installation

The M50A_260 supports wall mount installation and ground mount installation, which can shorten installation times and save on the cost for additional racks.

Wall Mount



Ground Mount



Toggle Latch Design

The toggle latch design saves considerable time for maintenance and minimizes the risk of water intrusion.



Specifications

Model Number	M50A_260
DC Input	
Max. Input Voltage	1100 V
Operating Voltage Range	200 - 1000 V
Mpp Voltage Range (Full Power)	390 - 900 V ¹⁾
Start Voltage	> 250 V
Nominal DC Voltage	600 V
Max. Input Current	Each MPPT: 26 A, Total: 132 A
MPP Tracker	6
Connection Type	2 / MPPT (fuse not required), Amphenol H4 DC Connector
DC Switch	Built-in
Surge Protection	Type II SPD (built-in) ; Type I+II SPD (optional)
AC Output	
Max. Output Power	55 kVA ²⁾
Max. Output Current	83 A
AC Output Power	50 kW
Nominal AC Voltage	3Ph 230 / 400V Y or Δ
Operating Voltage Range	80% to 130% of Nominal AC Voltage
Operating Frequency Range	50 / 60Hz ± 5Hz
Power Factor (Adjustable)	0.8 ind - 0.8 cap
Protection	Type II SPD (built-in) ; Type I+II SPD (optional)
T.H.D	< 3%
Night Time Consumption ³⁾	< 3.5 W
Efficiency	
Peak Efficiency	98.7%
Euro Efficiency	98.3%
Information	
Communication Port	RS-485 (built-in) ; SUB_1G, Wi-Fi (optional)
Display	LED (Grid, Alarm, COMM.)
Certification	
	IEC 62109-1/-2 EN 61000-6-3 VDE 0124-100 NB/T 32004: 2018 GB/T 19964: LVRT EN 61000-6-2 VDE-AR-N 4105 VDE-AR-N 4110 CNS 15382
General Data	
Protection	Arc fault detection, DC reverse polarity detection, Leakage current protection, Insulation resistance detection
Features	Night time Anti-PID, String current monitoring, IV curve scanning, Night time reactive power
Operating Temp. Range	-25 to +60°C (Derating Above 50°C)
Protection Level	IP66
Operating Elevation	< 4000 m
Cooling	Smart fan air cooling
Noise	65 dBA @1m, Amb25°C
Dimension (W x H x D)	699 x 629 x 264 mm
Weight	64 kg

1) Ambient < 40°C: 390 - 900V ; Ambient < 50°C: 390 - 850V

2) Ambient < 40°C ; Vdc: 505 - 800V

3) Night time consumption with standby communication

*All specifications are subject to change without prior notice



Delta Electronics, Inc.

39 Section 2 Huandong Road, Shanhua District,
Tainan City 74144, Taiwan (R.O.C.)

TEL : +886 6 505-6565

FAX : +886 6 505-1919

info@deltaww.com