



PV INVERTER

Three-Phase / M100A_280

Features

- Excellent performance with max. 98.7% efficiency
- Toggle latch and fast installation design reduce installation efforts
- Built-in DC switches, SPD, String monitoring and Arc fault detection
- SUB_1G and Wi-Fi for quick commission via APP
- PC and APP tools enable plant-level commission
- Smart cooling system ensures high yield and performance
- IP66 and lightweight design



Rooftop



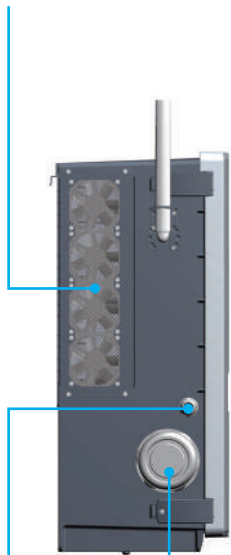
Ground Mounted



Feature Highlights

Swappable Fan Kit

Smart cooling system enhances overall plant performance while minimizing noise.



AC Output

Cable Gland for Communication
(RS-485 / Dry Contact / DI)

SUB_1G
(optional)



Wireless Communication (SUB_1G/Wi-Fi) APP

MyDeltaSolar APP provides quick on-site commission and total plant monitoring solution.



MyDeltaSolar

Wi-Fi (optional)



DC Input (H4)
x 16 strings

DC Switch

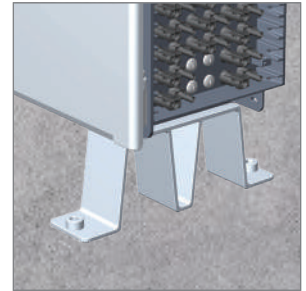
Fast Installation

The M100A_280 supports wall mount installation and ground mount installation, which can shorten installation times and save on the cost for additional racks.

Wall Mount



Ground Mount



Toggle Latch Design

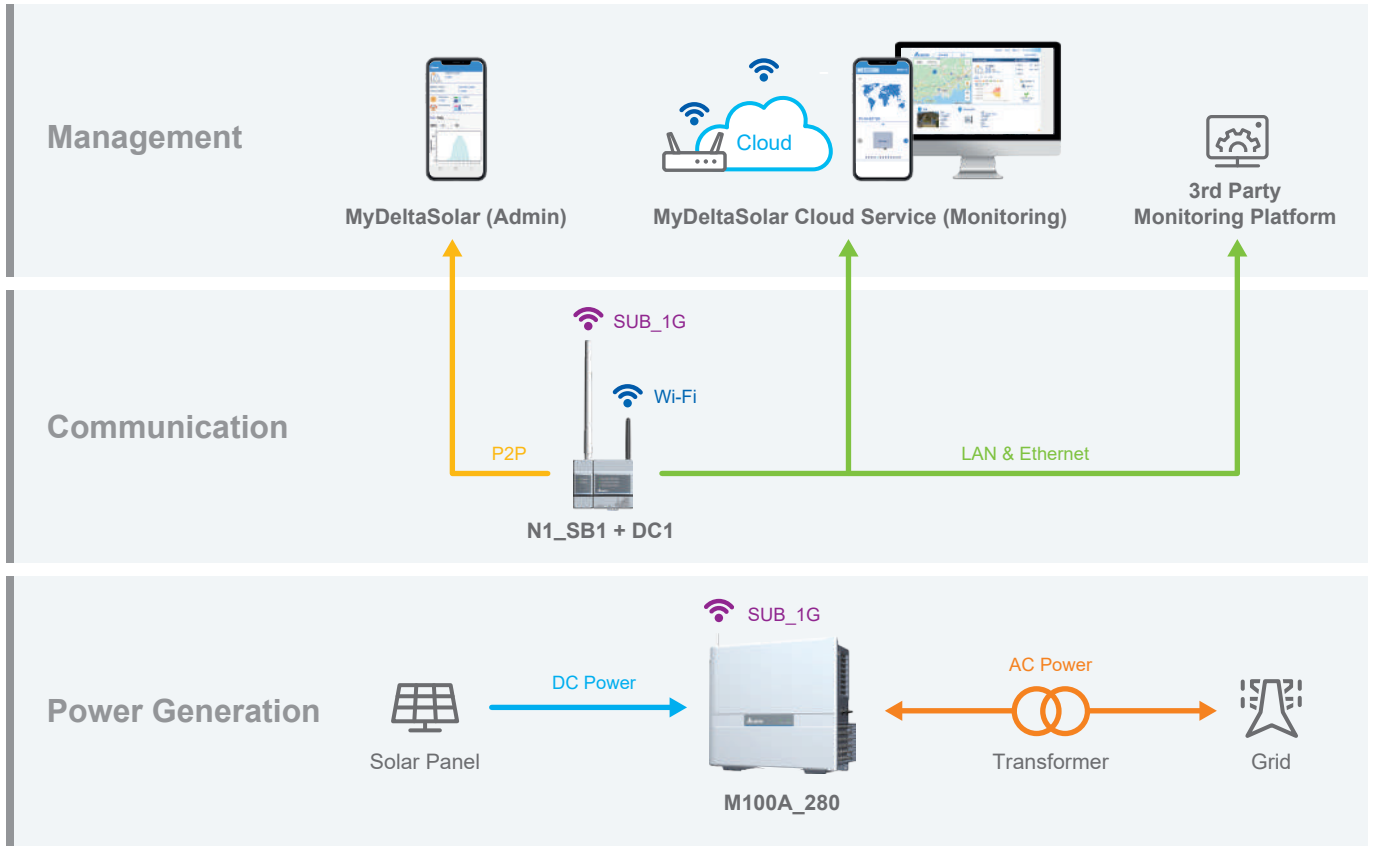
The toggle latch design saves considerable time for maintenance and minimizes the risk of water intrusion.



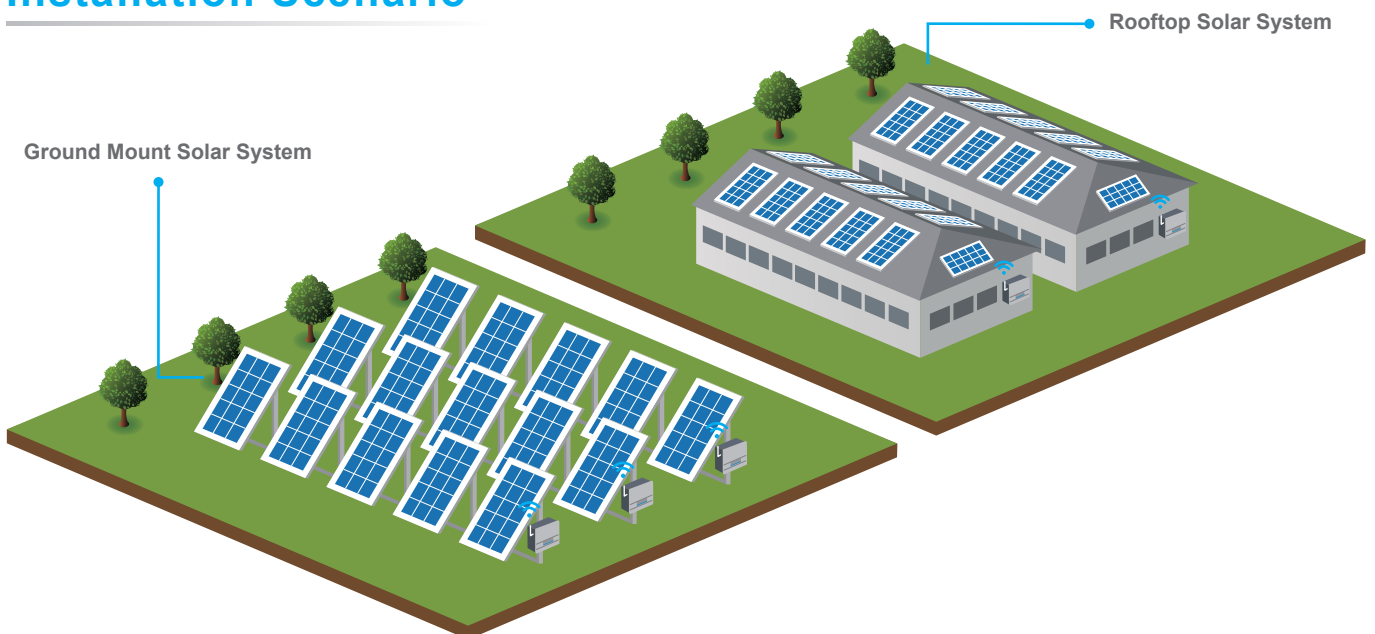
Product Overview

- Delta M100A_280 is able to reach 98.7% peak efficiency, 98.4% Euro-efficiency over converting PV energy.
- Eight MPPT design with wide MPP voltage range (520~840V) can maximize customer's revenue.

System Architecture



Installation Scenario



Specifications

| | | | | | |
|-------------------------------------|---|--|--|--|--|
| Model Number | M100A_280 | | | | |
| DC Input | | | | | |
| Max. Input Voltage | 1100 V | | | | |
| Operating Voltage Range | 200 - 1000 V | | | | |
| MPP Voltage Range for nominal power | 520 - 840 V | | | | |
| Nominal DC Voltage | 600 V | | | | |
| MPP Tracker | 8 | | | | |
| Max. Operating Current | 30 A / MPPT | | | | |
| Max. Short Current Capability (Isc) | 50 A / MPPT | | | | |
| DC Connection Type | 16 pairs of Amphenol H4 DC Connector | | | | |
| Surge Protection | Type II SPD (built-in) ; Type I+II SPD (optional) | | | | |
| DC Switch | 2 pcs | | | | |
| AC Output | | | | | |
| Max. Output Power | 110 kVA | | | | |
| Max. Output Current | 160 A | | | | |
| Output Power | 100 kW @ 50°C ; 110 kW @ 40°C | | | | |
| Nominal AC Voltage | AC 400 V , 3Ø3W or 3Ø4W | | | | |
| AC Voltage Range | 88% to 120% of nominal AC voltage | | | | |
| Operating Frequency Range | 50 / 60 Hz ± 5 Hz | | | | |
| Power Factor | 0.8 ind - 0.8 cap | | | | |
| Night Time Reactive Power | 60 kVAR | | | | |
| Surge Protection | Type II SPD | | | | |
| T.H.D | < 3% at Rated output current | | | | |
| AC Connection Type | Screw Clamp Terminal supports, Max. 185 mm ² , Cu and Al conductor | | | | |
| Night Time Consumption | < 3.5 W | | | | |
| Efficiency | | | | | |
| Peak Efficiency | 98.7 % | | | | |
| Euro Efficiency | 98.4 % | | | | |
| Communication | | | | | |
| Communication Port | RS-485 (built-in) ; SUB_1G, Wi-Fi (optional) | | | | |
| Communication Protocol | Delta, Sunspec | | | | |
| Indicator | LED (Alarm, Grid, COMM.) | | | | |
| Certificate | | | | | |
| Grid Support | IEC-62109-1/-2 VDE-ARN 4110 EN50549-2 PEA/MEA VPC | | | | |
| General Information | | | | | |
| Protection | Arc fault detection, DC reverse polarity detection, leakage current protection, Insulation resistance detection | | | | |
| Features | Night time Anti-PID, String current monitoring, IV curve scanning, Night time reactive power | | | | |
| Operating Elevation | < 4000 m | | | | |
| Operating Temperature | -25 to 60°C, > 50°C smart de-rating | | | | |
| Protection | IP66 | | | | |
| Cooling | Smart fan air cooling | | | | |
| Noise | 65.2 dBA @ 1m, Amb 25°C | | | | |
| Dimension (W x H x D) | 699 x 629 x 264 mm | | | | |
| Weight | 77 kg | | | | |

* Specifications are subject to change without prior notice.

Delta Electronics, Inc.

39 Section 2 Huandong Road, Shanhua District,
Tainan City 74144, Taiwan (R.O.C.)

TEL : +886 6 505-6565

FAX : +886 6 505-1919

info@deltaww.com

